



# 山东鲁岳化工有限公司

**Shandong Luyue Chemical Co., Ltd**

Anzhan Industry Park, Feicheng City, Shandong(271603), China

Tel/Fax:+86-531-82973066 E-mail: sales@luyuechemical.com

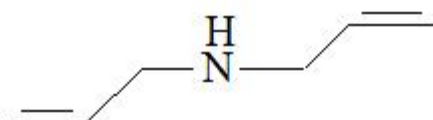
## Diallylamine

**Product Code:** LYFM-202

**CAS NO.** 124-02-7

**Molecular Formula:** C<sub>6</sub>H<sub>11</sub>N

**Structural Formula:**



### Property:

Its appearance is colorless and transparent liquid, combustible. Refractive index(20℃):

1.440;melting point: -88.4℃, boiling point:107-111℃; flash point:7℃.

### Specification:

Item	Index	Test Method
Content, %	≥99.0	GC
Moisture, %	≤0.3	DIN ISO 51777
Color(Hazen)	≤50	DIN ISO 6271

### Application:

Diallylamine is used in pharmaceutical intermediate and intermediates of agricultural chemicals, dyestuff, paint, organic synthesis and resin modifier. It also can be used in preparing amphoteric macromolecule polymer and etc.

### Package:

200L Iron Drum, 155Kg per Drum.

### Storage and Transportation:

Pack and preserve the product in a sealed, cool and dry condition, avoid contacting strong oxidants, keep away from open fire.

**The term of validity:** Three years.

**Transportation:** Dangerous goods.